

A46 Coventry Junctions (Walsgrave) Scheme Number: TR010066

6.2 Environmental Statement Figures Figures 13.1 - 13.7

APFP Regulation 5(1)(a)

Planning Act 2008

Infrastructure Planning (Applications: Prescribed Forms
and Procedure) Regulations 2009

Volume 6

November 2024

Infrastructure Planning

Planning Act 2008

**The Infrastructure Planning
(Applications: Prescribed Forms and
Procedure) Regulations 2009**

**A46 Coventry Junctions (Walsgrave)
Development Consent Order 202[x]**

ENVIRONMENTAL STATEMENT FIGURES
Figures 13.1 - 13.7

Regulation Number	Regulation 5(2)(a)
Planning Inspectorate Scheme Reference	TR010066
Application Document Reference	TR010066/APP/6.2
Author	A46 Coventry Junctions (Walsgrave) Project Team, National Highways

Version	Date	Status of Version
Rev 0	November 2024	Application Issue

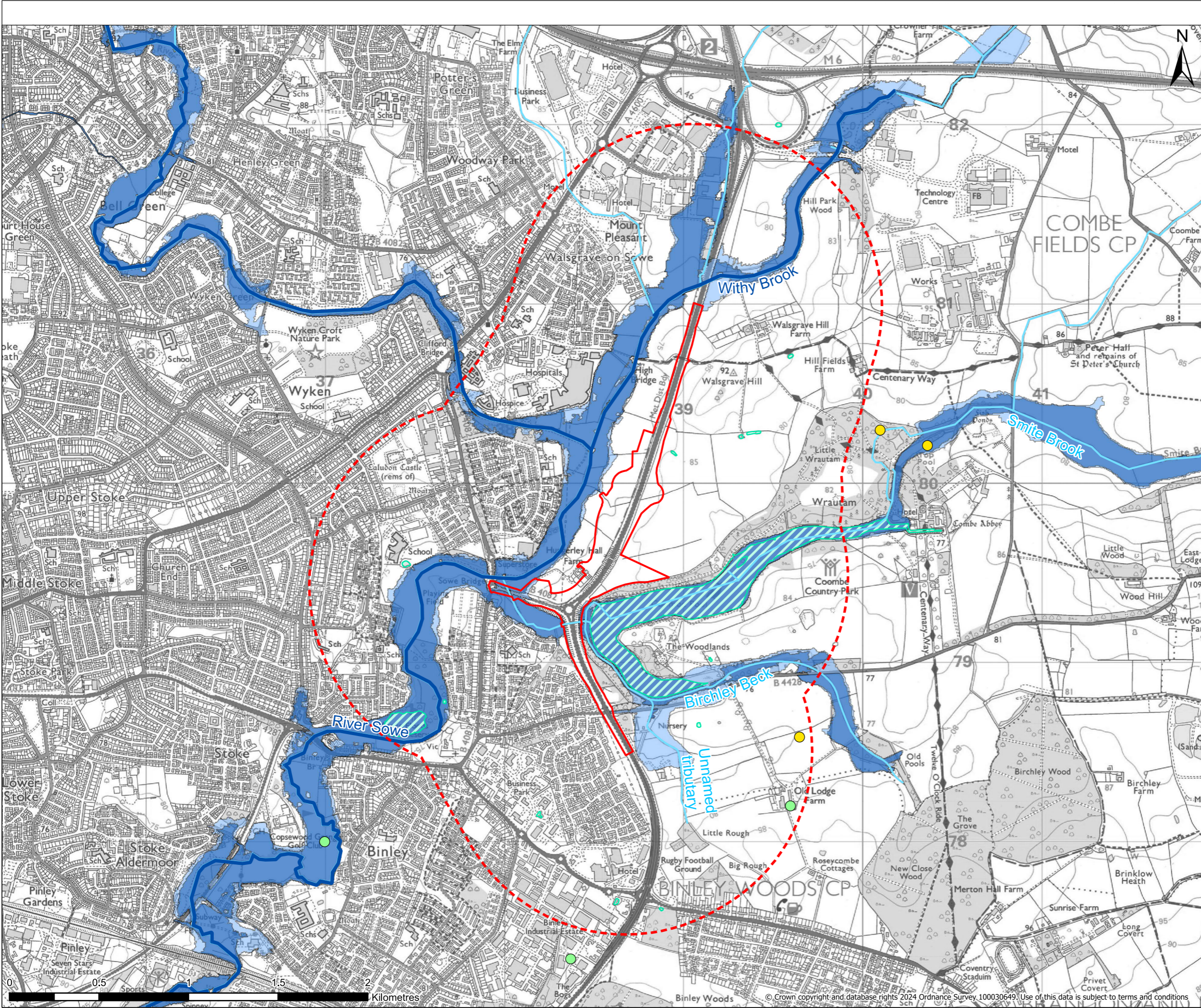
CONTENTS

1. Environmental Statement Figures2

1. Environmental Statement Figures

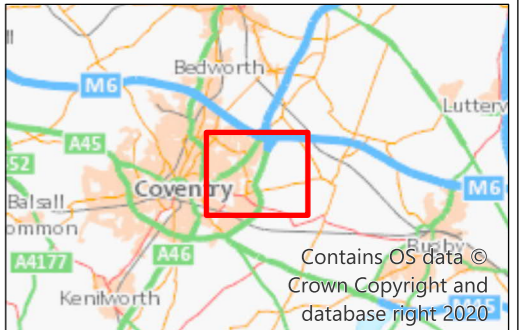
1.1.1. This document contains the following figures:

Figure	Figure Name
13.1	Surface Water Features, Licensed Abstractions, Consented Discharges and Fluvial Flood Risk
13.2	WFD Surface Waterbody Catchments
13.3	Pluvial Flood Risk
13.4	Aquifer and Environmental Designations
13.5	WFD Groundwater Bodies
13.6	Groundwater Abstractions and Source Protection Zones
13.7	Susceptibility to Groundwater Flooding



- Legend**
- Order Limits
 - 1km Study Area
 - Licensed Surface Water Abstraction Locations
 - Consented Surface Water Discharge Locations
 - Main River
 - Ordinary Watercourse
 - Ponds / Lakes
 - Flood Zone 3
 - Flood Zone 2

Contains public sector information licensed under the Open Government Licence v3.0. Contains, or is based on, information supplied by the Environment Agency. Contains, or is based on, information supplied by Natural England.



P03	08.11.2024	FIRST ISSUE	AC	BM	JS
REV	DATE	REVISION NOTE	ORG	CHKD	APP



Project Title
A46 COVENTRY JUNCTIONS (WALSGRACE)

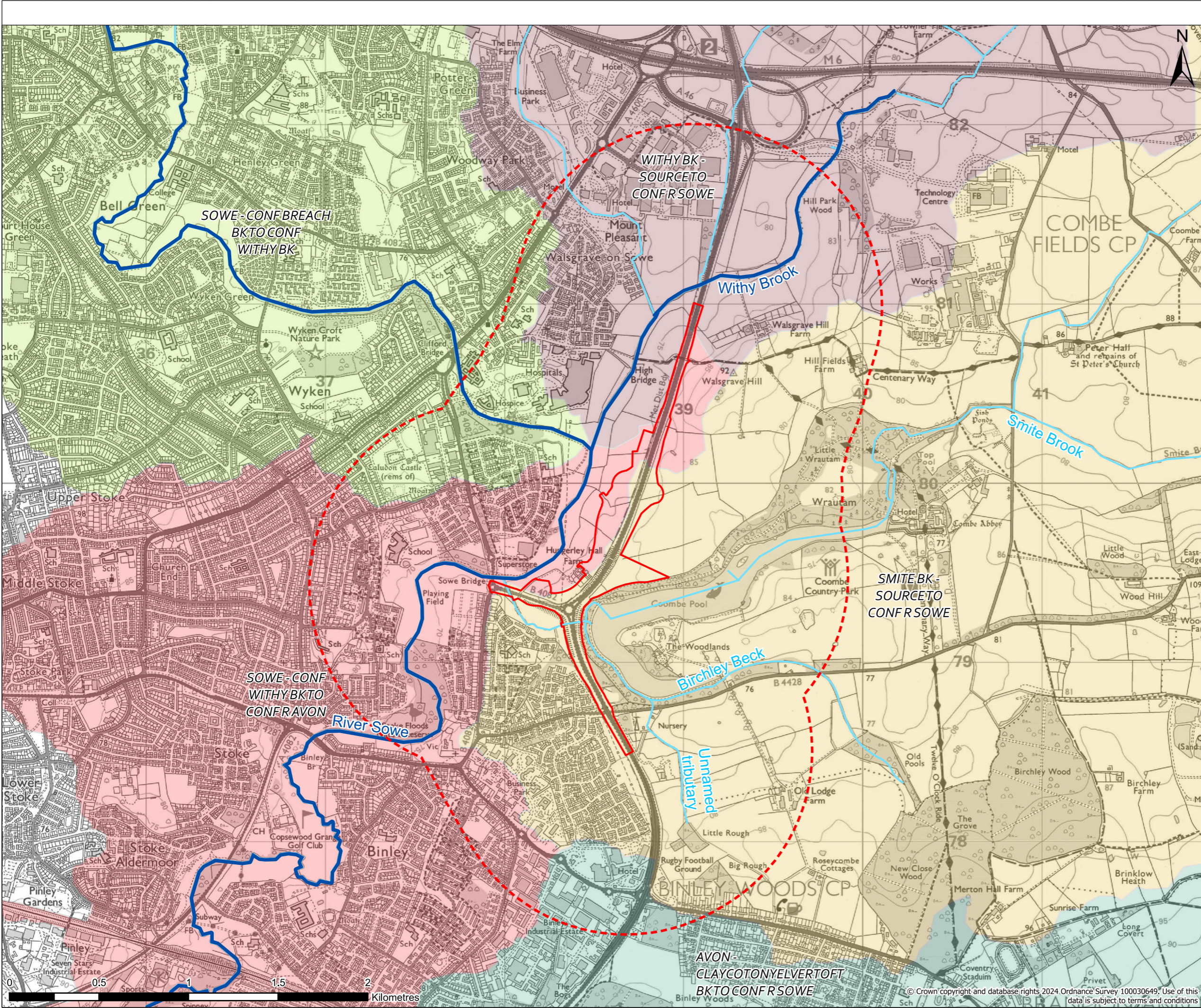
Project Stage
DCO APPLICATION

Drawing Title
FIGURE 13.1: SURFACE WATER FEATURES, LICENSED ABSTRACTIONS, CONSENTED DISCHARGES AND FLUVIAL FLOOD RISK

Suitability
FOR INFORMATION

Sheet Size	Scale	Status	Revision
A3	1:20,000	S2	P03

Drawing Number
HE604820-OIL-EWE-00-DR-LW-30009



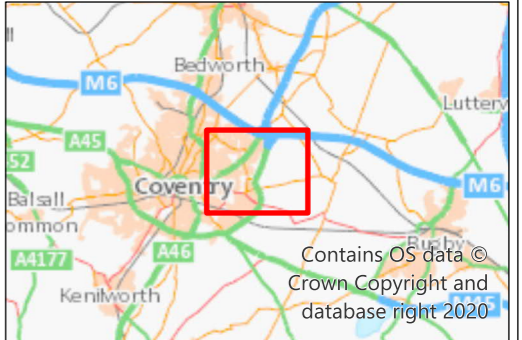
Legend


- Order Limits
- 1km Study Area
- Main River
- Ordinary Watercourse

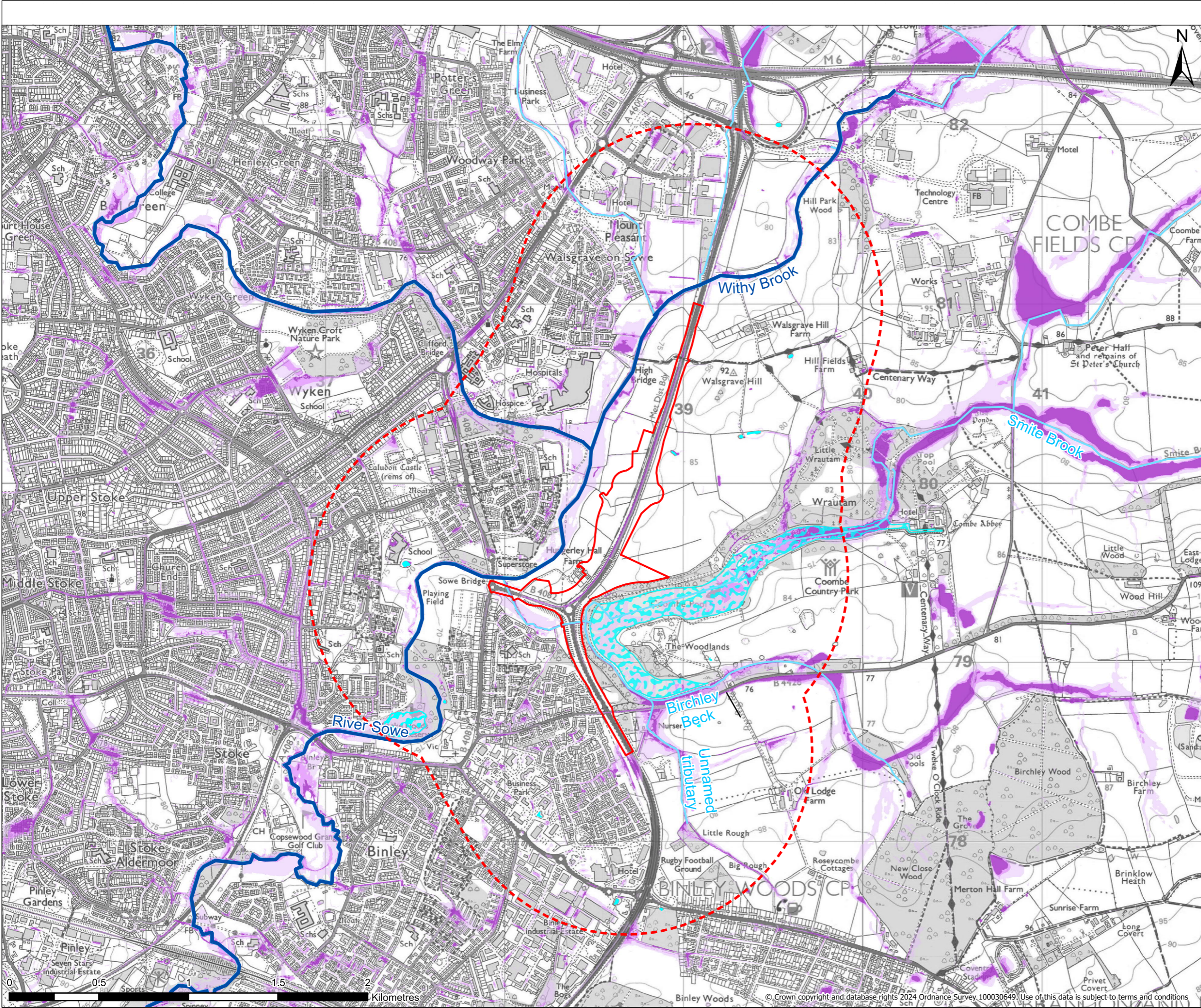
WFD Surface Waterbody Catchments

- Avon - ClaycotonYelvertoft Bk to conf R Sowe
- Smite Bk - source to conf R Sowe
- Sowe - conf Breach Bk to conf Withy Bk
- Sowe - conf Withy Bk to conf R Avon
- Withy Bk - source to conf R Sowe

Contains public sector information licensed under the Open Government Licence v3.0. Contains, or is based on, information supplied by the Environment Agency. Contains, or is based on, information supplied by Natural England.



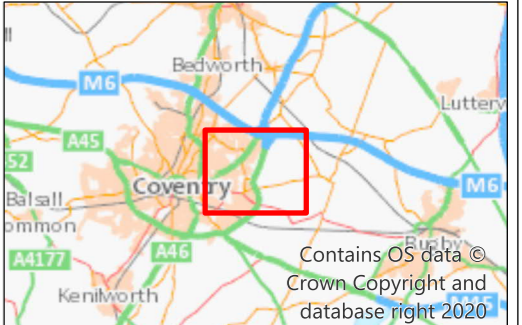
P03	08.11.2024	FIRST ISSUE	AC	BM	JS
REV	DATE	REVISION NOTE	ORG	CHK'D	APP
Client					
<div></div>					
Project Title					
A46 COVENTRY JUNCTIONS (WALSGRAVE)					
Project Stage					
DCO APPLICATION					
Drawing Title					
FIGURE 13.2: WFD SURFACE WATERBODY CATCHMENTS					
Suitability					
FOR INFORMATION					
Sheet Size	Scale	Status	Revision		
A3	1:20,000	S2	P03		
Drawing Number					
HE604820-OIL-EWE-00-DR-LW-30010					



Legend

- Order Limits
- 1km Study Area
- Main River
- Ordinary Watercourse
- Ponds / Lakes
- Risk of Flooding from Surface Water - High
- Risk of Flooding from Surface Water - Medium
- Risk of Flooding from Surface Water - Low

Contains public sector information licensed under the Open Government Licence v3.0. Contains, or is based on, information supplied by the Environment Agency. Contains, or is based on, information supplied by Natural England.



P03	08.11.2024	FIRST ISSUE	AC	BM	JS
REV	DATE	REVISION NOTE	ORG	CHKD	APP

Client

Project Title
A46 COVENTRY JUNCTIONS (WALSGRIVE)

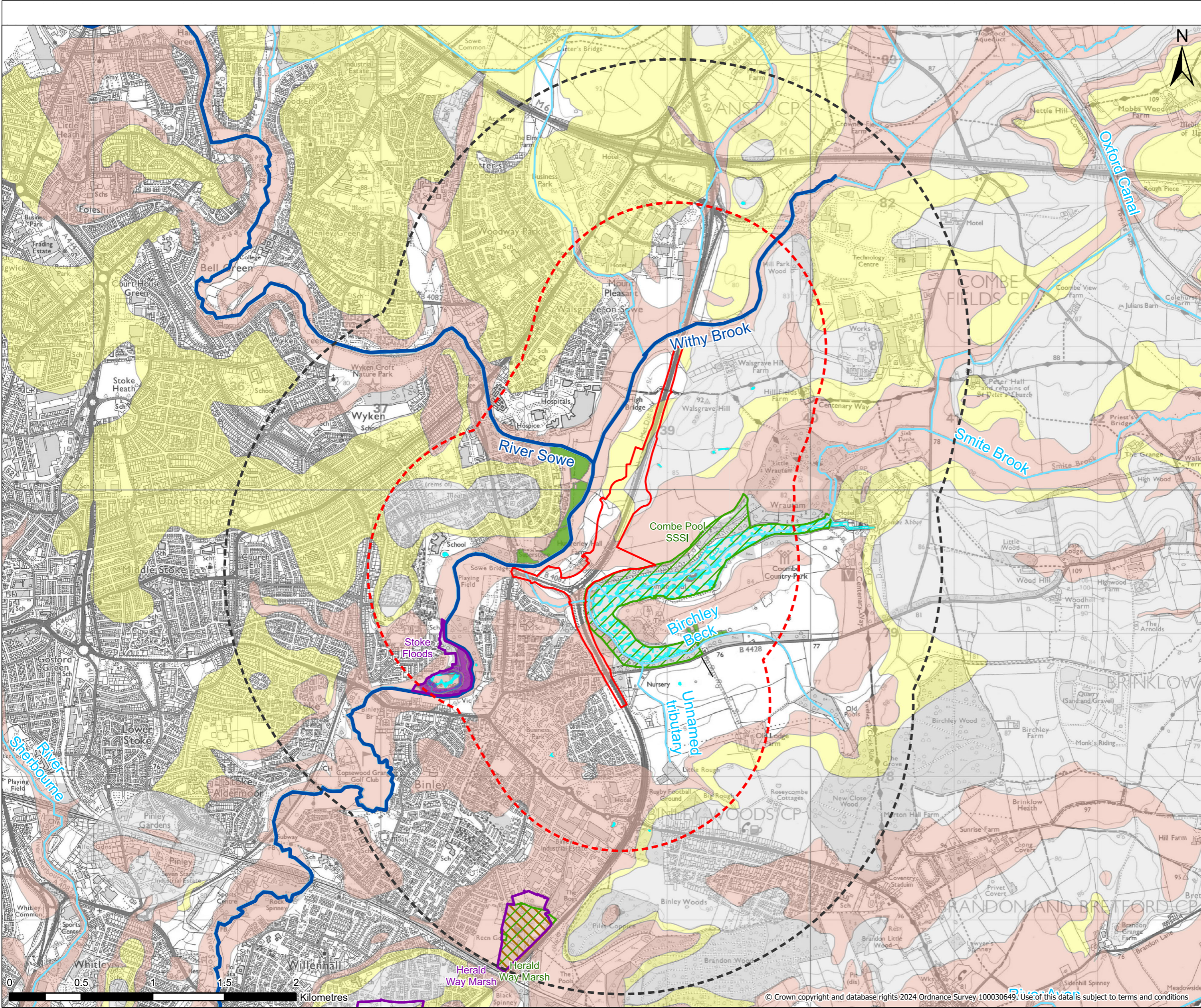
Project Stage
DCO APPLICATION

Drawing Title
FIGURE 13.3 : PLUVIAL FLOOD RISK

Suitability
FOR INFORMATION

Sheet Size	Scale	Status	Revision
A3	1:20,000	S2	P03

Drawing Number
HE604820-OIL-EWE-00-DR-LW-30011



Legend

- Order Limits
- 1km Study Area
- 2km Study Area
- Main River
- Ordinary Watercourse
- Ponds / Lakes
- Groundwater Dependent Terrestrial Ecosystems
- Site of Special Scientific Interest (SSSI)
- Local Nature Reserve (LNR)

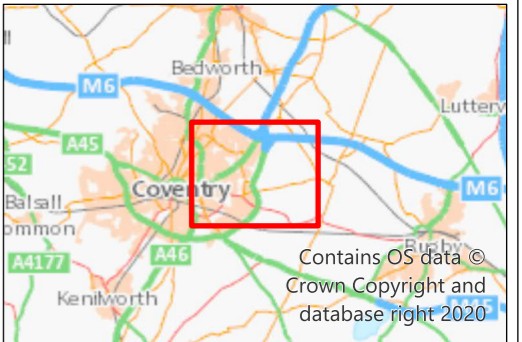
Priority Habitat Inventory

- Coastal and Floodplain Grazing Marsh
- Lowland Fens

Aquifer Designation (Superficial Deposits)

- Secondary A
- Secondary (undifferentiated)
- Unproductive

Contains public sector information licensed under the Open Government Licence v3.0. Contains, or is based on, information supplied by the Environment Agency. Contains, or is based on, information supplied by Natural England.



P03	08.11.2024	FIRST ISSUE	AC	BM	JS
REV	DATE	REVISION NOTE	ORG	CHKD	APP



Project Title
A46 COVENTRY JUNCTIONS (WALSGRIVE)

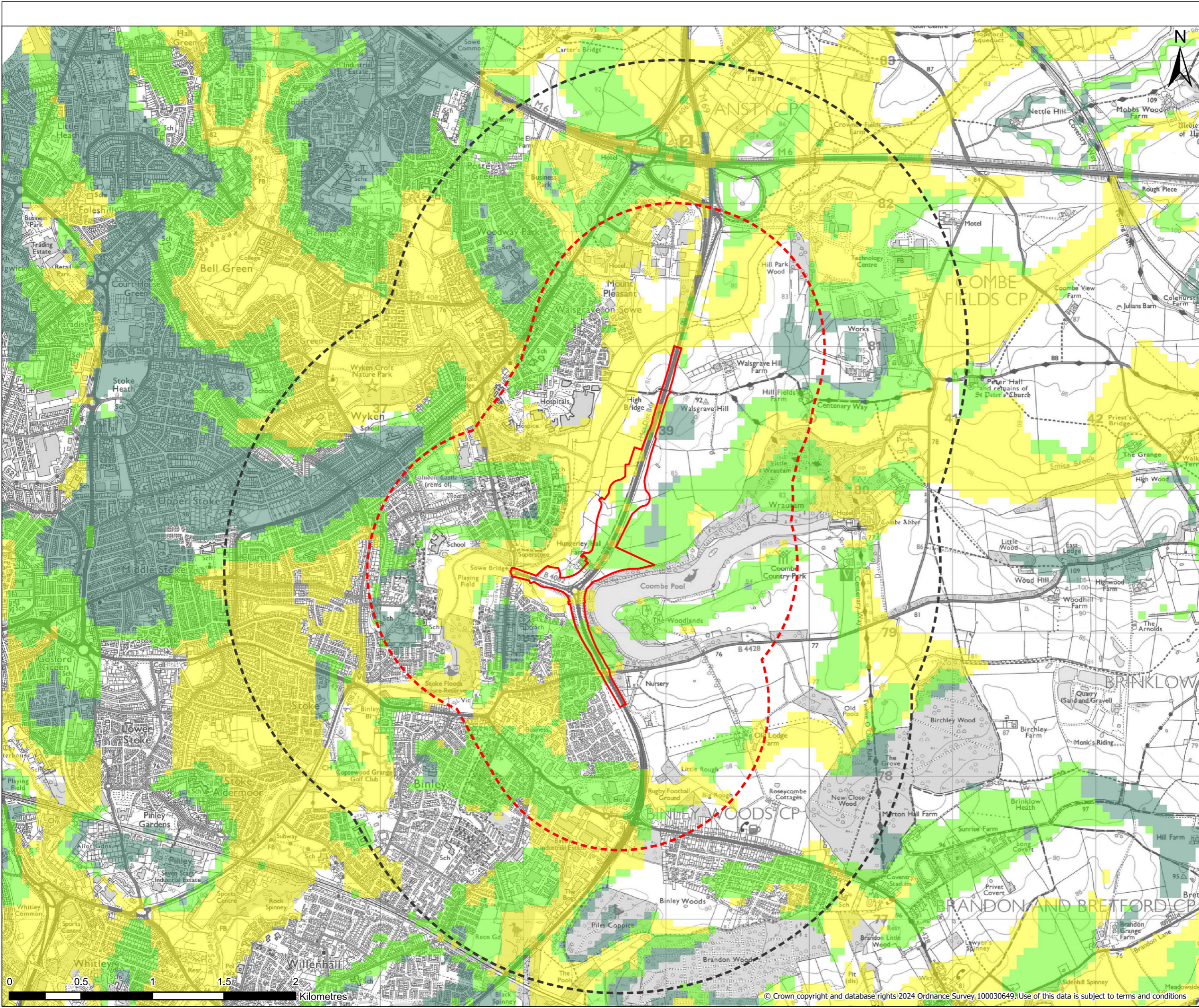
Project Stage
DCO APPLICATION

Drawing Title
FIGURE 13.4 : AQUIFER AND ENVIRONMENTAL DESIGNATIONS

Suitability
FOR INFORMATION

Sheet Size	Scale	Status	Revision
A3	1:25,000	S2	P03

Drawing Number
HE604820-OIL-EWE-00-DR-LW-30012



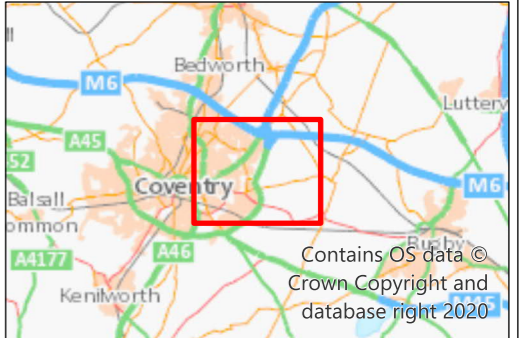
Legend

- Order Limits
- 1km Study Area
- 2km Study Area

Groundwater Flooding

- Limited potential for groundwater flooding to occur
- Potential for groundwater flooding of property situated below ground level
- Potential for groundwater flooding to occur at surface

Contains British Geological Survey materials © UKRI 2024. Licence No. 2021/3PDL/853452 British Geological Survey © NERC All rights reserved.



P03	08.11.2024	FIRST ISSUE	AC	BM	JS
REV	DATE	REVISION NOTE	ORG	CHKD	APP
Client					



Project Title
A46 COVENTRY JUNCTIONS (WALSGRAVE)

Project Stage
DCO APPLICATION

Drawing Title
FIGURE 13.7 : SUSCEPTIBILITY TO GROUNDWATER FLOODING

Suitability
FOR INFORMATION

Sheet Size	Scale	Status	Revision
A3	1:25,000	S2	P03

Drawing Number
HE604820-OIL-EWE-00-DR-LW-30015